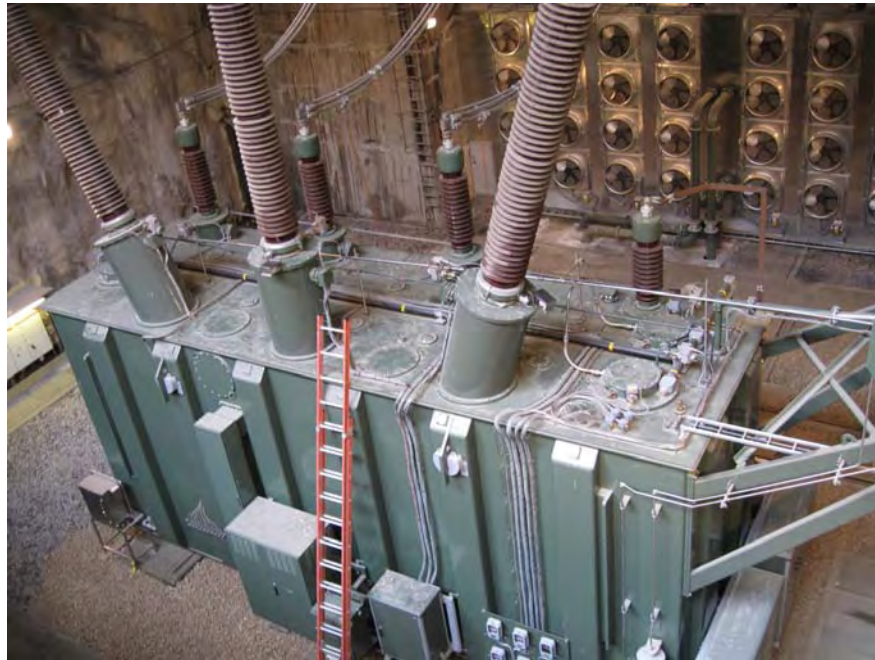
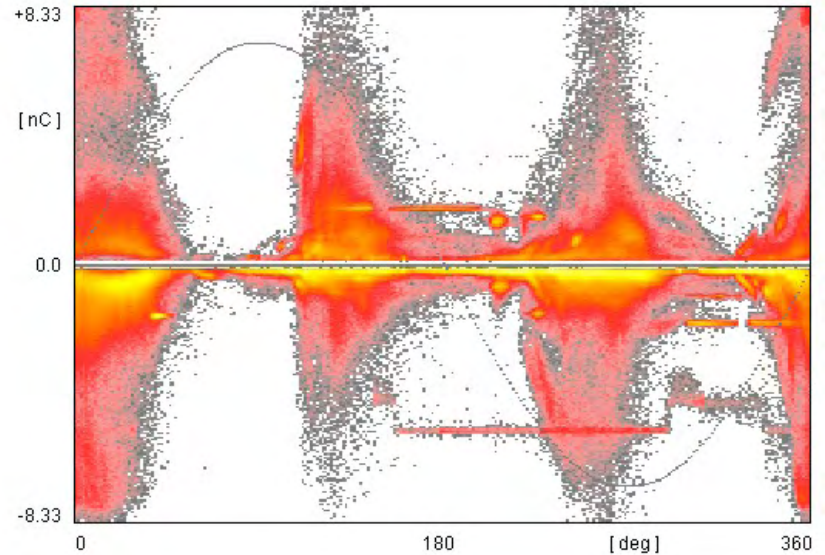
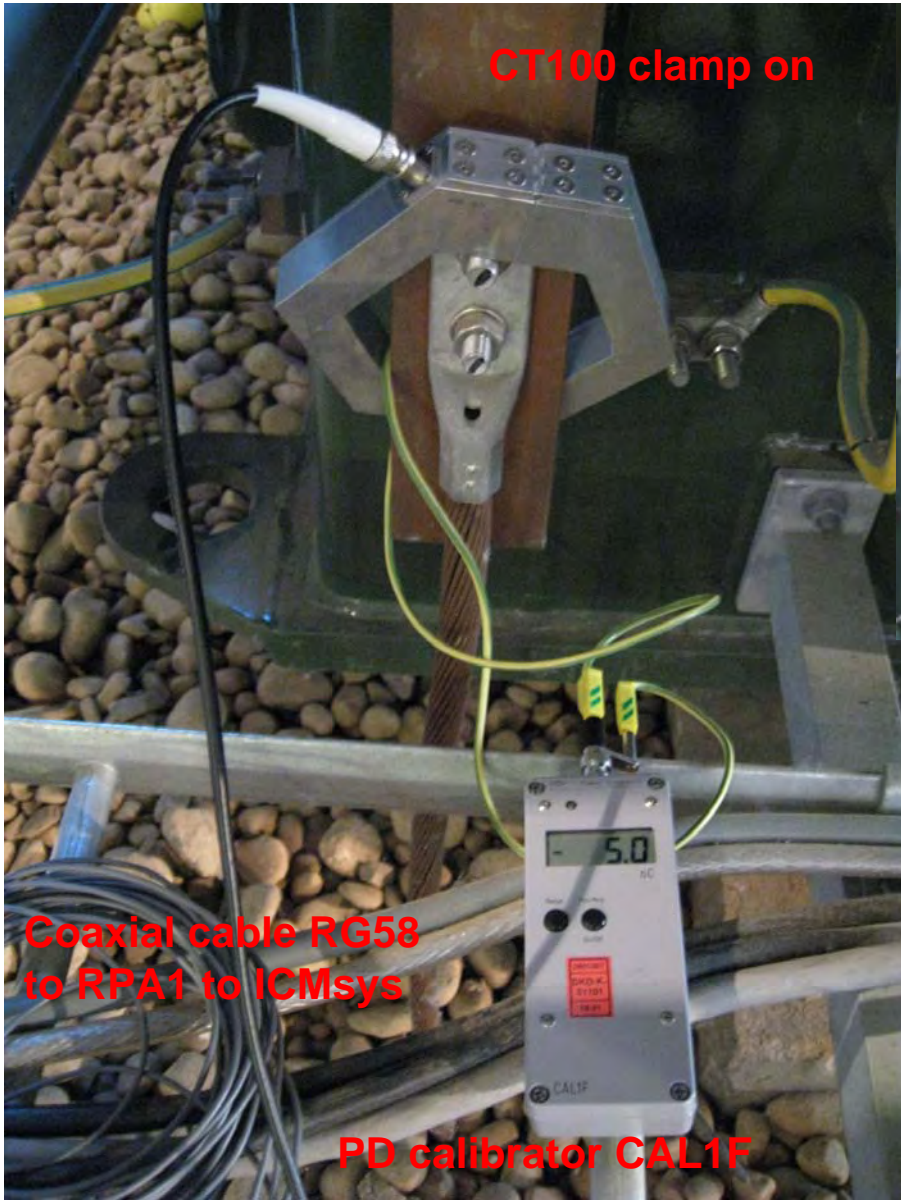


# Power Transformer PD scanning/test method

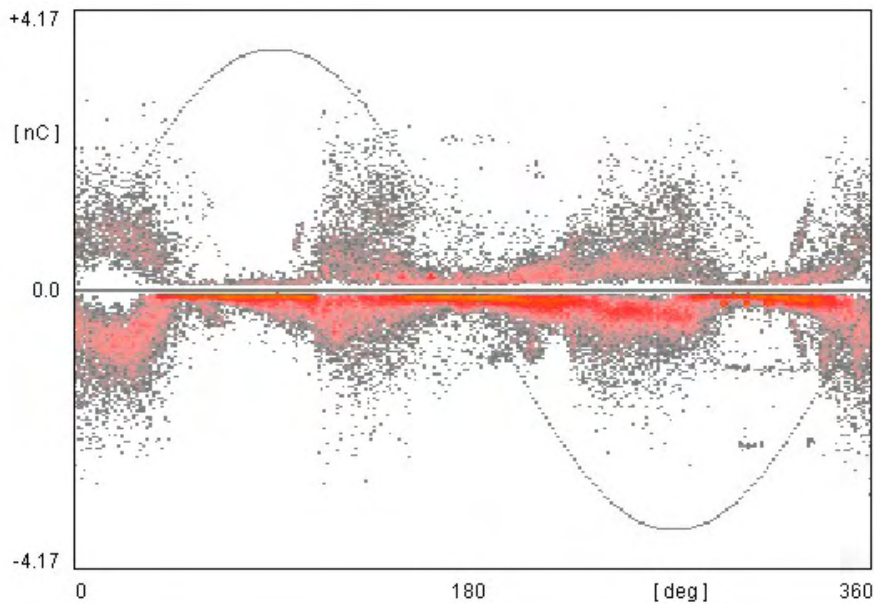
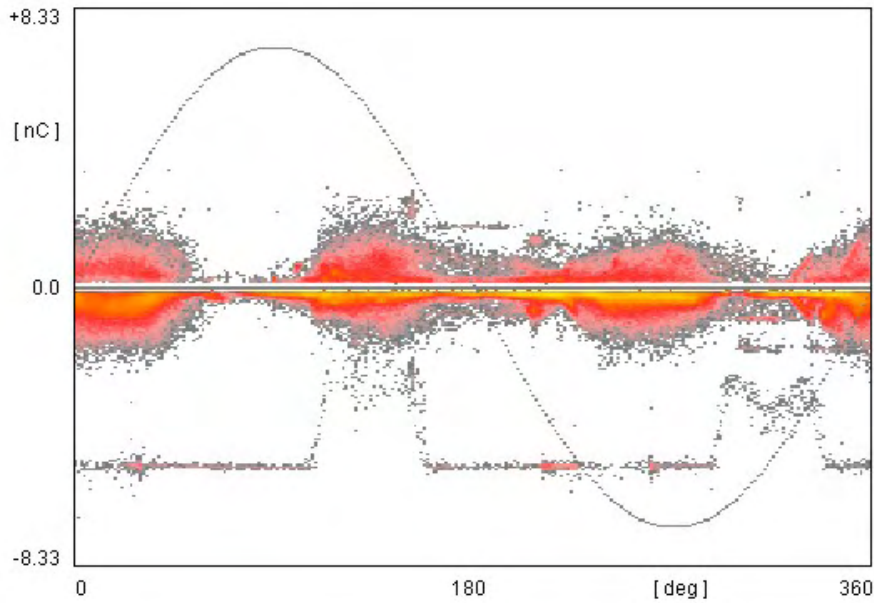
Requirements: the power transformer needs to have a neutral bushing with the grounding wire mounted to insulated supports all down from the bushing to GND. This measurement can be performed during the normal operation, power on

1. Apply the CT100 around the neutral ground led, connect to ICMsystem channel 1 input via the RPA1.
2. Calibrate using the CAL unit with eg. 5 nC, apply the loop around the CT100
3. Gate the corona using the Antenna unit DA1 with RPA1 to gating input, eg. 10%

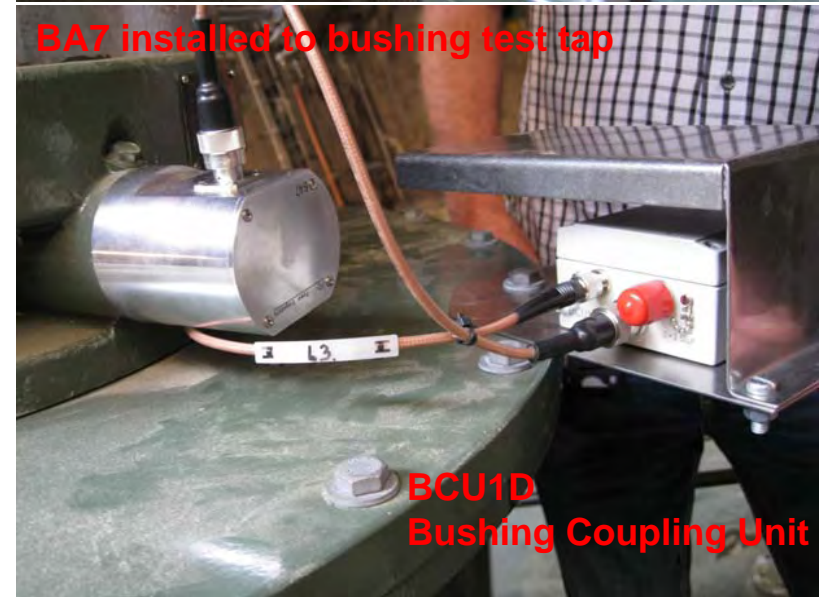








**Cable RG142/TNC from BCU1D to CTB2C**



**BA7 installed to bushing test tap**

**BCU1D  
Bushing Coupling Unit**